

PEFS Series (UL1741)

(1-5 strings)-String Level Rapid Shutdown Device



High Craftsmanship AND High Standards



Small volume



Flame retardant material



Anti-UV



Outdoor installation IP65



Multiple shutdown methods over temperature/loss of AC /emergency shutdown



Service life 25 years



High reliability



0V output physical isolation

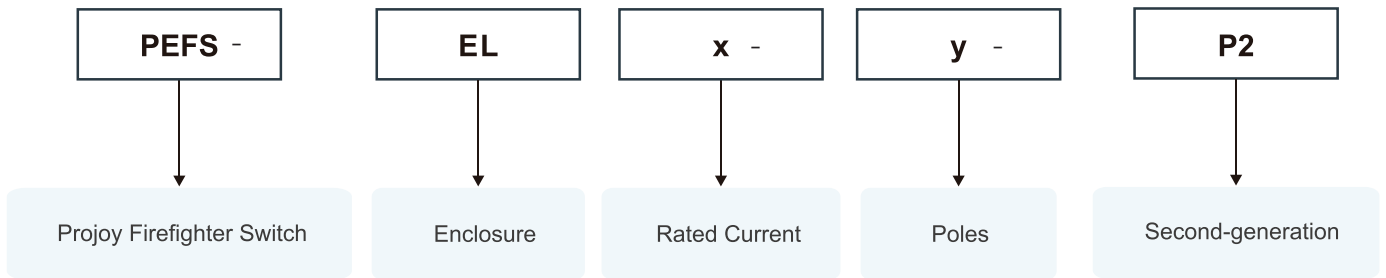


FB1 FB2 function achieves external monitoring



Easy to install

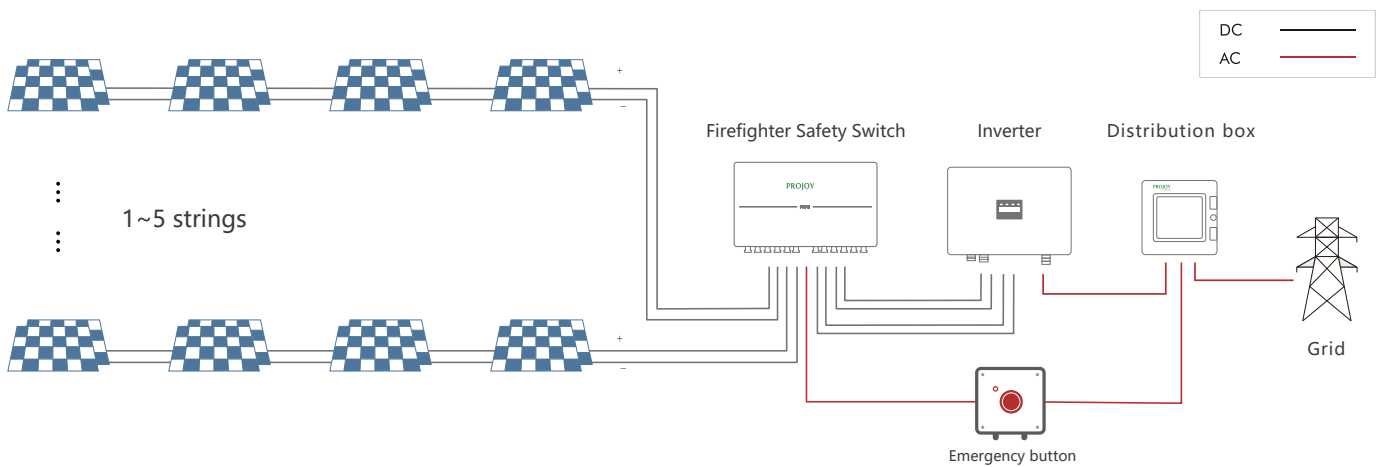
Naming



Models: PEFS-ELx-y. Rated current: x=16/25/32/40/55/40H/50H, y= 6/8/10

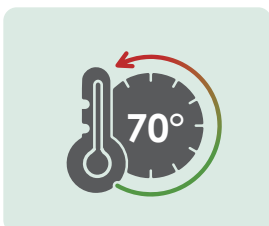
Diagram

NOTE: The PEFS may not be installed in direct sunlight or be in direct contact with (continuous) ingress water.

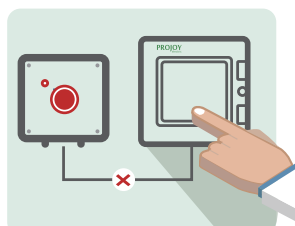


Tripping ways

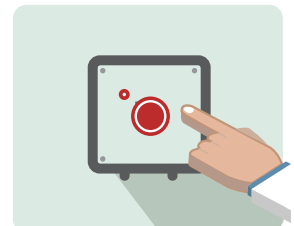
By temperature



By AC Power cut-off



By Manual

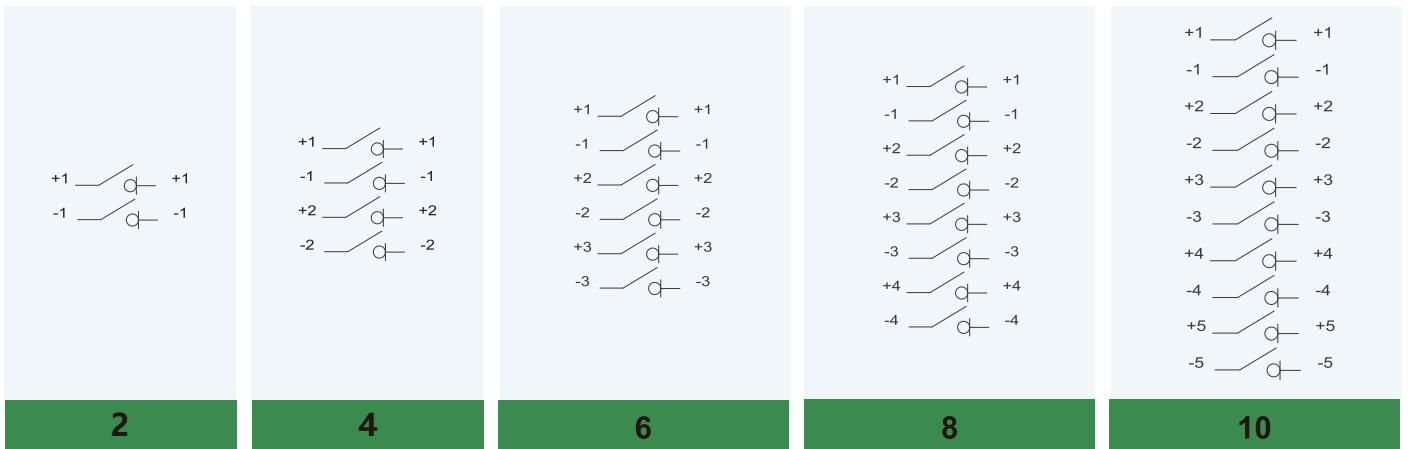


Technical data

Technical Parameter	
Main Parameters	PEFS-ELx-y-P2
System voltage (Vdc)	300~1500
Max current per string(A)	30
Number of strings	1/2/3/4/5
Poles	2/4/6/8/10
Operating voltage	100Vac–270Vac
Nominal voltage	230Vac
Nominal current	30mA
FB1 FB2 function(Standard configuration)	contact capacity:250VAC,16A
Operating temperature	–40°C–+70°C
Automatically switch off by temperature	+70°C
Storage temperature	–40°C – +85°C
Ingress protection level	IP65
Protection level	Class II
Certification	ETL/CSA
Regulations compliance	UL1741
Mechanical life	10000
Electrical life	300

Data of PEFS refer to built-in DC isolators. Data according to IEC60947-3(ed.3.2):2015. Utilization category DC-PV1.						Poles	No. of Strings	Part Number
300V	600V	800V	1000V	1200V	1500V			
16A	16A	16A	9A	6A	3A	2/4/6/8/10	1/2/3/4/5	PEFS-EL16-2/4/6/8/10-P2
30A	30A	30A	30A	30A	20A	2/4/6/8/10	1/2/3/4/5	PEFS-EL40H-2/4/6/8/10-P2
30A	30A	30A	30A	30A	30A	2/4/6/8/10	1/2/3/4/5	PEFS-EL50H-2/4/6/8/10-P2

Contact Configuration



Dimensions

Unit: mm

